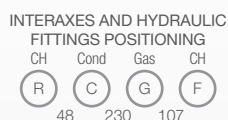


High power condensing wall-hung boilers

MYNUTE GREEN 50 R.S.I.



NEW
Now available full system cascade up to 200 kW (see Beretta Systems Catalogue 2013)

- MYNUTE GREEN 50 R.S.I. is a high power condensing boiler, that can be configured in different ways, according to your needs.
- The **RANGE RATED certification** allows to adapt the power of the boiler to the real thermal requests of the installation.
- **Efficiency ★★★★★** according to European Directive EEC 92/42, reducing running costs by up to 35% more than a conventional boiler.
- Minimum polluting emissions: class 5 performance (EN 483), the best European category in ecological terms, helping to safeguard the environment.
- Condensing heat exchanger in extruded aluminium with radial design (Patent Pending) that allows to get the most from the combustion of the gas, whether NG or LPG.
- Compact dimensions and low weight make MYNUTE GREEN 50 R.S.I. the ideal choice wherever you need to replace an old appliance in a narrow space.
- User-friendly interface, providing a high number of settings to the installer.
- Built-in thermoregulation with outdoor probe kit provided as standard.
- Built-in interface board for second pump control.
- LPG conversion kit available as an accessory.

Room-sealed

Efficiency ★ ★ ★ ★ Dir. 92/42/EEC

CODE	GAS	MODEL	DIMENSIONS H x W x D (mm)	CH INPUT MIN - MAX (kW)
Heating only boiler				
20056275	NG	MYNUTE GREEN 50 R.S.I.	764 x 553 x 284	9 - 47

Specific kits and accessories

Beretta has developed a specific line of hydraulic and safety kits and components that enable different configurations of this boilers, according to your installation needs. Besides harmonizing perfectly with each other, MYNUTE GREEN 50 R.S.I. specific kits and components ensure maximum comfort and saving that are supplied only by a unique specialised supplier.

CODE	DESCRIPTION	CODE	DESCRIPTION
20028475	Hydraulic header/separator kit	20028476	3-ways valve kit for DHW tank
20028473	ISPESL hydraulic manifold	20043895	Gas-safety cut-off valve
20028474	ISPESL safety kit	20028472	Taps for system without ISPESL safeties
20028478	Air intake kit for B23 installation (*)	20028027	Flue adapter kit from Ø80-80 to Ø60/100
1220599	Socket probe for DHW tank - 3 m wire	20028029	Flue adapter kit from Ø80-80 to Ø80/125

(*) Other flues configurations are possible as this boiler is homologated to work under many different installation types of the categories "B" and "C".

Comfort accessories

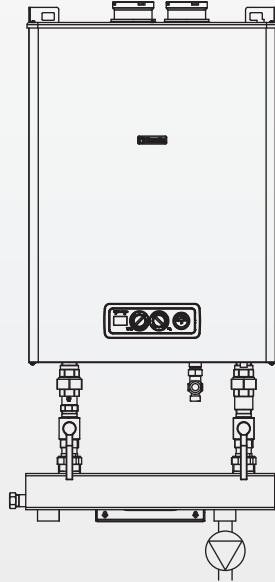
CODE	DESCRIPTION	CODE	DESCRIPTION
20050692	OMEGA WIRELESS modulating 7-day thermostat (WHITE)	20059639	ALPHA DGT digital room thermostat
20050693	OMEGA WIRELESS modulating 7-day thermostat (BLACK)	20059644	ALPHA 7D WIRELESS 7-day digital room thermostat
20050684	OMEGA modulating 7-day thermostat (WHITE)	20063872	ALPHA 7D 7-day digital room thermostat
20050685	OMEGA modulating 7-day thermostat (BLACK)	20062614	BE09 interface for alarm remotation
20059641	ALPHA DGT WIRELESS digital room thermostat		

High power condensing wall-hung boilers MYNUTE GREEN 50 R.S.I.

BERETTA SUGGESTED CONFIGURATIONS

Beretta indicates in the following pages a selection of the most common configurations of MYNUTE GREEN 50 R.S.I., among which you can choose the one that best meets your installation requirements.

Configuration for central heating only

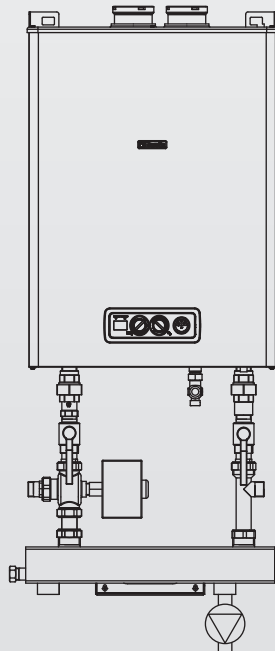


Description	Code	Q.ty
Mynute Green 50 R.S.I.	20056275	1
Taps for system	20028472	1
Hydraulic header / separator kit	20028475	1
Air intake kit for B23 (*)	20028478	1
Second pump kit for main CH	(**)	1

(*) Other flues configurations are possible as this boiler is homologated to work under many different installation types of the categories "B" and "C".

(**) For sizing advice please contact Pre-Sales Department.

Configuration with 3-ways valve kit for DHW tank and central heating



Description	Code	Q.ty
Mynute Green 50 R.S.I.	20056275	1
Taps for system	20028472	1
Hydraulic header/separator kit	20028475	1
Air intake kit for B23 (*)	20028478	1
"3-ways valve kit" for DHW tank	20028476	1
Socket probe for DHW tank - 3 m wire	1220599	1
Second pump kit for main CH	(**)	1

(*) Other flues configurations are possible as this boiler is homologated to work under many different installation types of the categories "B" and "C".

(**) For sizing advice please contact Pre-Sales Department.