

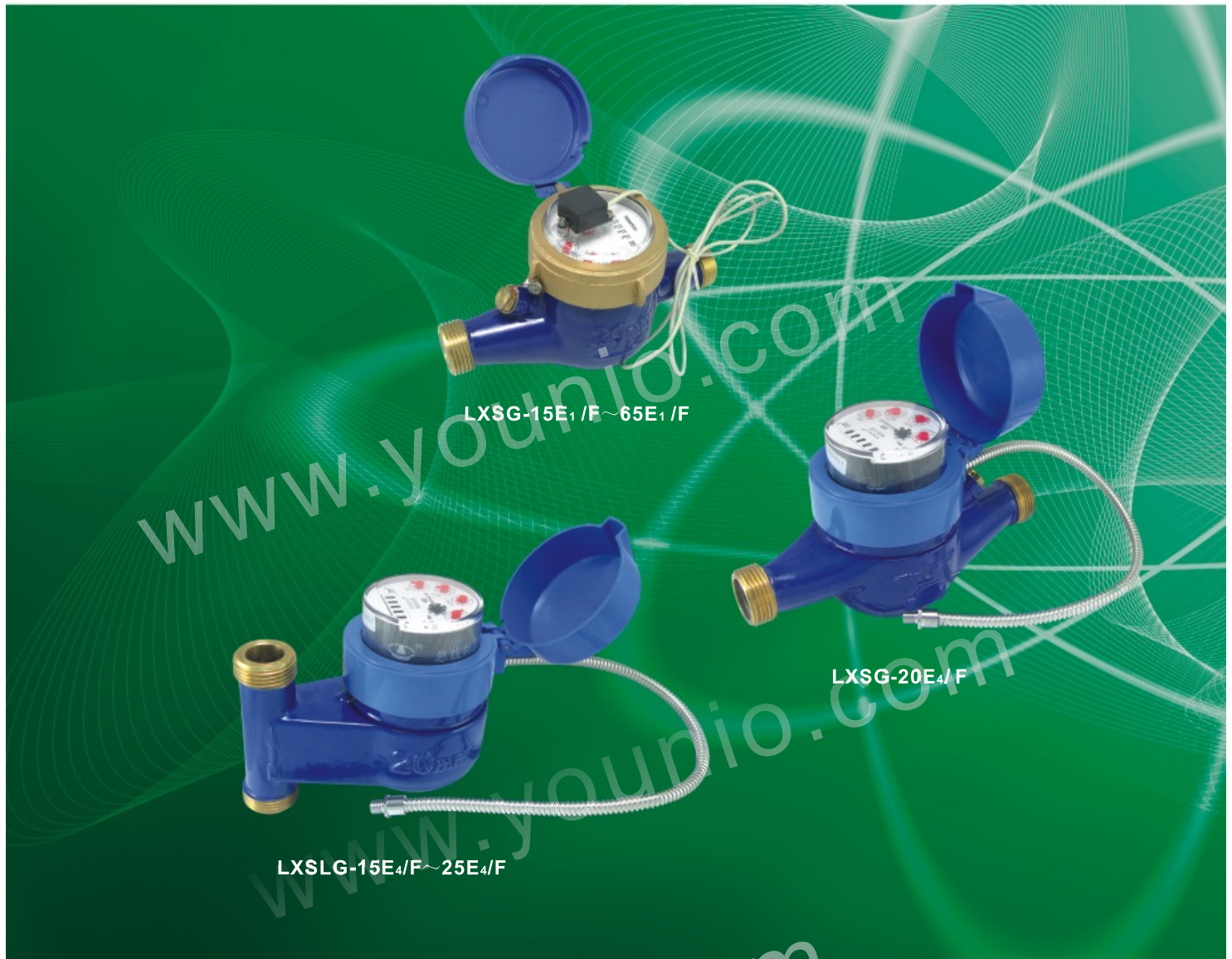


LXSG-15E1/S

## Multi Jet Dry Type Vane Wheel Water Meter

### Features:

- Dry-dial, magnetic drive, protected against external magnetic tampering
- Vacuum sealed register, frost resistant, keeps clear reading for long time
- Brass body, cast iron body or plastic body, optional
- Brass body and cast iron body can be painted
- Internal or external adjusting device, optional
- For hot or cold water
- Remote transmission device can be added upon request
- Many kinds of sensors, such as Reed Switch, Hall and Weagand can be supplied upon request
- Pulse output may be 1l/pulse , 10l/pulse
- The meters conform to ISO4064 Standard Class B



## Multi Jet Dry Type Vane Wheel Water Meter With Remote Transmission Device

### Features:

- Dry-dial, magnetic drive, protected against external magnetic tampering
- Vacuum sealed register, frost resistant, keeps clear reading for long time
- Brass body can be painted
- External adjusting device
- For hot or cold water
- Remote transmission device can be added upon request  
Many kinds of sensors, such as Reed Switch, Hall and Weagand can be supplied upon request  
Pulse output may be 1l/pulse , 10l/pulse
- The meters conform to ISO4064 Standard Class B

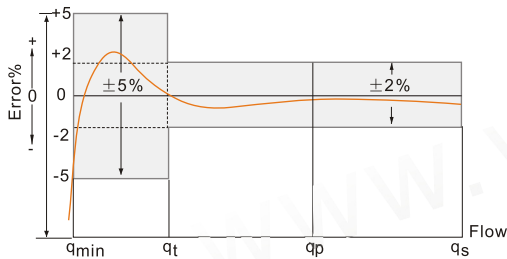
### Technical data:

Nominal size DN(mm)	Class of measurement	Overload flow-rate $q_s$ (m <sup>3</sup> /h)	Permanent flow-rate $q_p$ (m <sup>3</sup> /h)	Transitional flow-rate $q_t$ (l/h)	Minimum flow-rate $q_{min}$ (l/h)
15	B	3	1.5	120	30
20	B	5	2.5	200	50
25	B	7	3.5	280	70
32	B	12	6.0	480	120
40	B	20	10	800	200
50	B	30	15	3000	450

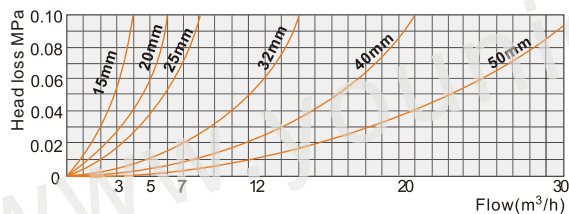
### Overall dimensions and weight

Type	Size (mm)	Length (mm) L	Width (mm) W	Height (mm) H	Connecting Thread D	Weight (kg)
LXSG-15E1/F	15	165	99	104	G1 1/4" B	1.5
LXSG-20E1/F	20	195/190	99	106	G 3/4" B	1.7
LXSG-25E1/F	25	225/260	104	120	G 1" B	2.4
LXSG-32E1/F	32	230/260	104	120	G1 1/4" B	2.8
LXSG-40E1/F	40	245/300	120	155	G1 1/2" B	5.1
LXSG-50E1/F	50	280/300	125	155	G 2" B	7.2

### Error curve



### Head loss curve

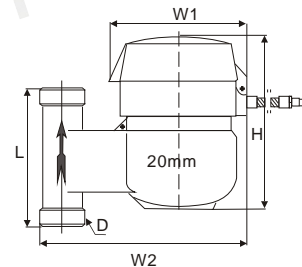
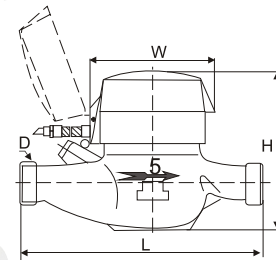
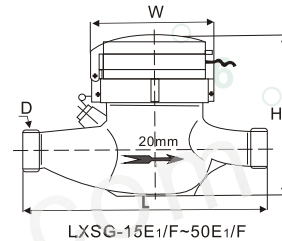


### Working condition:

- Water temperature ≤ 50 °C (Hot water meter ≤ 90 °C )
- Water pressure ≤ 1MPa (PN: 1.6MPa/16bar)
- ΔP ≤ 0.1MPa

### Accuracy:

- From minimum flow-rate (q<sub>min</sub>) inclusive, to transitional flow-rate (q<sub>t</sub>), exclusive: ± 5%
- From transitional flow-rate (q<sub>t</sub>) inclusive, to overload flow-rate (q<sub>s</sub>), exclusive: ± 2% (Hot water meter: ± 3%)





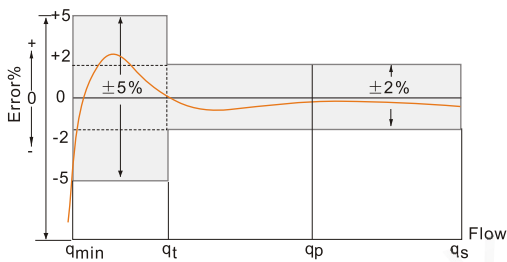
### Technical data:

Nominal size DN(mm)	Class of measurement	Overload flow-rate $q_s(m^3/h)$	Permanent flow-rate $q_p(m^3/h)$	Transitional flow-rate $q_t(l/h)$	Minimum flow-rate $q_{min}(l/h)$
15	B	3	1.5	120	30
20	B	5	2.5	200	50
25	B	7	3.5	280	70
32	B	12	6.0	480	120
40	B	20	10	800	200
50	B	30	15	3000	450

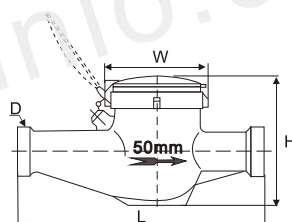
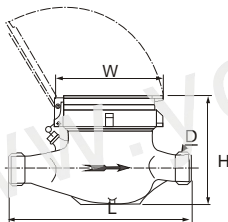
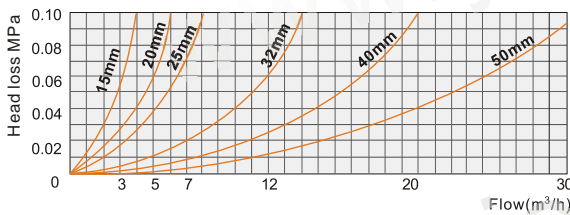
### Overall dimensions and weight

Type	Size (mm)	Length (mm) L	Width (mm) W	Height (mm) H	Connecting Thread D	Weight (kg)
LXSG-15E	15	165	99	104	G 3/4" B	1.5
LXSG-20E	20	195/190	99	106	G 1" B	1.7
LXSG-25E	25	225/260	104	120	G 1 1/4" B	2.4
LXSG-32E	32	230/260	104	120	G 1 1/2" B	2.8
LXSG-40E	40	245/300	120	155	G 2" B	5.1
LXSG-50E	50	280/300	125	155	G 2 1/2" B	7.2

### Error curve



### Head loss curve



### Working condition:

- Water temperature  $\leq 50^\circ\text{C}$  (Hot water meter  $\leq 90^\circ\text{C}$ )
- Water pressure  $\leq 1\text{MPa}$  (PN: 1.6MPa/16bar)
- $\Delta P \leq 0.1\text{MPa}$

### Accuracy:

- From minimum flow-rate ( $q_{min}$ ) inclusive, to transitional flow-rate ( $q_t$ ), exclusive:  $\pm 5\%$
- From transitional flow-rate ( $q_t$ ) inclusive, to overload flow-rate ( $q_s$ ), exclusive:  $\pm 2\%$  (Hot water meter:  $\pm 3\%$ )

